

- 1
- 2
- 3
- 4
- 5
- 6
- 7
- 8
- 9
- 10
- 11
- 12
- 13
- 14
- 15
- 16
- 17
- 18
- 19

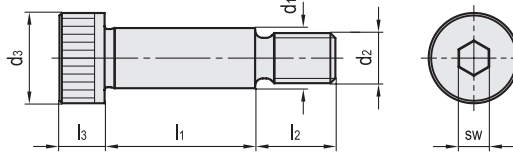
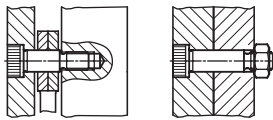
STANDARDUTFÖRANDE

- **ISO 7379:** svartoxiderat stål klass 12.9 (brottgräns 1200 N/mm²).
Polerad på diameterytan d1.
- **ISO 7379-NI:** AISI 304 rostfritt stål. Polerad på diameterytan d1.

KÄNNETECKEN OCH ANVÄNDNING

För ISO 7379 passkruv med krage får inte maximalt åtdragningsmoment definieras genom stål klassens motståndskraft (12.9), som begränsas av de relativt små anliggningsytorna (axlar) samt spåren vid övergång mellan diametrarna d1 d2 och d3.
Enligt ISO-standarderna kan skruvarna vara med eller utan räfflat huvud. ISO standardavvikelser: det officiella ISO-standard databladet har följande dimensioner för d2 - d1 M5-6,5 / M10-13 / M20-25.

Applikationsexempel

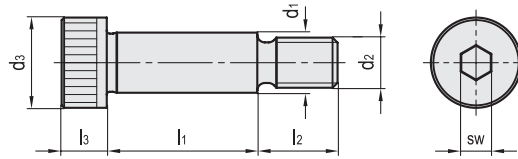


ISO 7379-NI

Kod	Benämning	d1 f9	d2	d3	l1 +0,25	l2	l3	sw	Δ
GN.35211	ISO 7379-4-M3-4-NI	4	M 3	7	4	7	3	2	2
GN.35212	ISO 7379-4-M3-5-NI	4	M 3	7	5	7	3	2	2
GN.35213	ISO 7379-4-M3-6-NI	4	M 3	7	6	7	3	2	2
GN.35214	ISO 7379-4-M3-8-NI	4	M 3	7	8	7	3	2	2
GN.35215	ISO 7379-4-M3-10-NI	4	M 3	7	10	7	3	2	2
GN.35216	ISO 7379-4-M3-12-NI	4	M 3	7	12	7	3	2	2
GN.35217	ISO 7379-4-M3-16-NI	4	M 3	7	16	7	3	2	3
GN.35228	ISO 7379-5-M4-5-NI	5	M 4	9	5	8	4	2.5	3
GN.35229	ISO 7379-5-M4-6-NI	5	M 4	9	6	8	4	2.5	3
GN.35230	ISO 7379-5-M4-8-NI	5	M 4	9	8	8	4	2.5	4
GN.35231	ISO 7379-5-M4-10-NI	5	M 4	9	10	8	4	2.5	3
GN.35232	ISO 7379-5-M4-12-NI	5	M 4	9	12	8	4	2.5	5
GN.35233	ISO 7379-5-M4-16-NI	5	M 4	9	16	8	4	2.5	5
GN.35234	ISO 7379-5-M4-20-NI	5	M 4	9	20	8	4	2.5	6
GN.35235	ISO 7379-5-M4-25-NI	5	M 4	9	25	8	4	2.5	6
GN.35236	ISO 7379-5-M4-30-NI	5	M 4	9	30	8	4	2.5	7
GN.35251	ISO 7379-6-M5-10-NI	6	M 5	10	10	9.5	4.5	3	6
GN.35252	ISO 7379-6-M5-12-NI	6	M 5	10	12	9.5	4.5	3	7
GN.35253	ISO 7379-6-M5-16-NI	6	M 5	10	16	9.5	4.5	3	8
GN.35254	ISO 7379-6-M5-20-NI	6	M 5	10	20	9.5	4.5	3	8
GN.35255	ISO 7379-6-M5-25-NI	6	M 5	10	25	9.5	4.5	3	10
GN.35256	ISO 7379-6-M5-30-NI	6	M 5	10	30	9.5	4.5	3	11
GN.35257	ISO 7379-6-M5-40-NI	6	M 5	10	40	9.5	4.5	3	12
GN.35258	ISO 7379-6-M5-50-NI	6	M 5	10	50	9.5	4.5	3	14
GN.35259	ISO 7379-6-M5-60-NI	6	M 5	10	60	9.5	4.5	3	18
GN.35261	ISO 7379-8-M6-16-NI	8	M 6	13	16	11	5.5	4	14
GN.35262	ISO 7379-8-M6-20-NI	8	M 6	13	20	11	5.5	4	15
GN.35263	ISO 7379-8-M6-25-NI	8	M 6	13	25	11	5.5	4	17
GN.35264	ISO 7379-8-M6-30-NI	8	M 6	13	30	11	5.5	4	19
GN.35265	ISO 7379-8-M6-40-NI	8	M 6	13	40	11	5.5	4	21
GN.35266	ISO 7379-8-M6-50-NI	8	M 6	13	50	11	5.5	4	27
GN.35267	ISO 7379-8-M6-60-NI	8	M 6	13	60	11	5.5	4	31

ISO 7379-NI

Kod	Benämning	d1 f9	d2	d3	l1 +0,25	l2	l3	sw	Δ
GN.35271	ISO 7379-10-M8-16-NI	10	M 8	16	16	13	7	5	24
GN.35272	ISO 7379-10-M8-20-NI	10	M 8	16	20	13	7	5	26
GN.35273	ISO 7379-10-M8-25-NI	10	M 8	16	25	13	7	5	30
GN.35274	ISO 7379-10-M8-30-NI	10	M 8	16	30	13	7	5	33
GN.35275	ISO 7379-10-M8-40-NI	10	M 8	16	40	13	7	5	39
GN.35276	ISO 7379-10-M8-50-NI	10	M 8	16	50	13	7	5	46
GN.35277	ISO 7379-10-M8-60-NI	10	M 8	16	60	13	7	5	50
GN.35278	ISO 7379-10-M8-70-NI	10	M 8	16	70	13	7	5	56
GN.35279	ISO 7379-10-M8-80-NI	10	M 8	16	80	13	7	5	62
GN.35280	ISO 7379-10-M8-90-NI	10	M 8	16	90	13	7	5	68
GN.35281	ISO 7379-10-M8-100-NI	10	M 8	16	100	13	7	5	75
GN.35286	ISO 7379-12-M10-16-NI	12	M 10	18	16	16	8	6	38
GN.35287	ISO 7379-12-M10-20-NI	12	M 10	18	20	16	8	6	39
GN.35288	ISO 7379-12-M10-25-NI	12	M 10	18	25	16	8	6	45
GN.35289	ISO 7379-12-M10-30-NI	12	M 10	18	30	16	8	6	47
GN.35290	ISO 7379-12-M10-40-NI	12	M 10	18	40	16	8	6	56
GN.35291	ISO 7379-12-M10-50-NI	12	M 10	18	50	16	8	6	69
GN.35292	ISO 7379-12-M10-60-NI	12	M 10	18	60	16	8	6	76
GN.35293	ISO 7379-12-M10-70-NI	12	M 10	18	70	16	8	6	86
GN.35294	ISO 7379-12-M10-80-NI	12	M 10	18	80	16	8	6	91
GN.35295	ISO 7379-12-M10-90-NI	12	M 10	18	90	16	8	6	99
GN.35296	ISO 7379-12-M10-100-NI	12	M 10	18	100	16	8	6	100
GN.35301	ISO 7379-16-M12-30-NI	16	M 12	24	30	18	11	8	93
GN.35302	ISO 7379-16-M12-40-NI	16	M 12	24	40	18	11	8	109
GN.35303	ISO 7379-16-M12-50-NI	16	M 12	24	50	18	11	8	123
GN.35304	ISO 7379-16-M12-60-NI	16	M 12	24	60	18	11	8	123
GN.35305	ISO 7379-16-M12-70-NI	16	M 12	24	70	18	11	8	155
GN.35306	ISO 7379-16-M12-80-NI	16	M 12	24	80	18	11	8	170
GN.35307	ISO 7379-16-M12-90-NI	16	M 12	24	90	18	11	8	186
GN.35308	ISO 7379-16-M12-100-NI	16	M 12	24	100	18	11	8	200



ISO 7379

Kod	Benämning	d1	f9	d2	d3	l1 +0.25	l2	l3	sw	Δ	Δ
GN.35351	ISO 7379-4-M3-4	4	M 3	7	4	7	3	2	2		
GN.35352	ISO 7379-4-M3-5	4	M 3	7	5	7	3	2	2		
GN.35353	ISO 7379-4-M3-6	4	M 3	7	6	7	3	2	2		
GN.35354	ISO 7379-4-M3-8	4	M 3	7	8	7	3	2	2		
GN.35355	ISO 7379-4-M3-10	4	M 3	7	10	7	3	2	3		
GN.35356	ISO 7379-4-M3-12	4	M 3	7	12	7	3	2	3		
GN.35357	ISO 7379-4-M3-16	4	M 3	7	16	7	3	2	3		
GN.35358	ISO 7379-4-M3-20	4	M 3	7	20	7	3	2	3		
GN.35359	ISO 7379-4-M3-25	4	M 3	7	25	7	3	2	4		
GN.35360	ISO 7379-4-M3-30	4	M 3	7	30	7	3	2	4		
GN.35368	ISO 7379-5-M4-5	5	M 4	9	5	8	4	2.5	3		
GN.35369	ISO 7379-5-M4-6	5	M 4	9	6	8	4	2.5	4		
GN.35370	ISO 7379-5-M4-8	5	M 4	9	8	8	4	2.5	4		
GN.35371	ISO 7379-5-M4-10	5	M 4	9	10	8	4	2.5	4		
GN.35372	ISO 7379-5-M4-12	5	M 4	9	12	8	4	2.5	5		
GN.35373	ISO 7379-5-M4-16	5	M 4	9	16	8	4	2.5	5		
GN.35374	ISO 7379-5-M4-20	5	M 4	9	20	8	4	2.5	6		
GN.35375	ISO 7379-5-M4-25	5	M 4	9	25	8	4	2.5	7		
GN.35376	ISO 7379-5-M4-30	5	M 4	9	30	8	4	2.5	7		
GN.35377	ISO 7379-5-M4-40	5	M 4	9	40	8	4	2.5	9		
GN.35161	ISO 7379-6-M5-10	6	M 5	10	10	9.5	4.5	3	6		
GN.35162	ISO 7379-6-M5-12	6	M 5	10	12	9.5	4.5	3	6		
GN.35163	ISO 7379-6-M5-16	6	M 5	10	16	9.5	4.5	3	7		
GN.35164	ISO 7379-6-M5-20	6	M 5	10	20	9.5	4.5	3	8		
GN.35165	ISO 7379-6-M5-25	6	M 5	10	25	9.5	4.5	3	5		
GN.35166	ISO 7379-6-M5-30	6	M 5	10	30	9.5	4.5	3	10		
GN.35381	ISO 7379-6-M5-35	6	M 5	10	35	9.5	4.5	3	12		
GN.35167	ISO 7379-6-M5-40	6	M 5	10	40	9.5	4.5	3	13		
GN.35382	ISO 7379-6-M5-45	6	M 5	10	45	9.5	4.5	3	15		
GN.35168	ISO 7379-6-M5-50	6	M 5	10	50	9.5	4.5	3	15		
GN.35383	ISO 7379-6-M5-55	6	M 5	10	55	9.5	4.5	3	15		
GN.35384	ISO 7379-6-M5-60	6	M 5	10	60	9.5	4.5	3	17		
GN.35385	ISO 7379-6-M5-65	6	M 5	10	65	9.5	4.5	3	18		
GN.35386	ISO 7379-6-M5-70	6	M 5	10	70	9.5	4.5	3	19		
GN.35387	ISO 7379-6-M5-80	6	M 5	10	80	9.5	4.5	3	21		
GN.35169	ISO 7379-8-M6-16	8	M 6	13	16	11	5.5	4	13		
GN.35170	ISO 7379-8-M6-20	8	M 6	13	20	11	5.5	4	15		
GN.35171	ISO 7379-8-M6-25	8	M 6	13	25	11	5.5	4	17		
GN.35172	ISO 7379-8-M6-30	8	M 6	13	30	11	5.5	4	19		
GN.35388	ISO 7379-8-M6-35	8	M 6	13	35	11	5.5	4	21		
GN.35173	ISO 7379-8-M6-40	8	M 6	13	40	11	5.5	4	23		
GN.35389	ISO 7379-8-M6-45	8	M 6	13	45	11	5.5	4	25		
GN.35174	ISO 7379-8-M6-50	8	M 6	13	50	11	5.5	4	27		
GN.35390	ISO 7379-8-M6-55	8	M 6	13	55	11	5.5	4	28		
GN.35175	ISO 7379-8-M6-60	8	M 6	13	60	11	5.5	4	30		
GN.35391	ISO 7379-8-M6-65	8	M 6	13	65	11	5.5	4	32		
GN.35392	ISO 7379-8-M6-70	8	M 6	13	70	11	5.5	4	34		
GN.35393	ISO 7379-8-M6-80	8	M 6	13	80	11	5.5	4	38		
GN.35394	ISO 7379-8-M6-90	8	M 6	13	90	11	5.5	4	42		
GN.35395	ISO 7379-8-M6-100	8	M 6	13	100	11	5.5	4	46		
GN.35176	ISO 7379-10-M8-16	10	M 8	16	16	13	7	5	23		
GN.35177	ISO 7379-10-M8-20	10	M 8	16	20	13	7	5	26		
GN.35178	ISO 7379-10-M8-25	10	M 8	16	25	13	7	5	29		
GN.35179	ISO 7379-10-M8-30	10	M 8	16	30	13	7	5	32		
GN.35160	ISO 7379-10-M8-35	10	M 8	16	35	13	7	5	35		
GN.35180	ISO 7379-10-M8-40	10	M 8	16	40	13	7	5	38		
GN.35397	ISO 7379-10-M8-45	10	M 8	16	45	13	7	5	41		

ISO 7379

Kod	Benämning	d1	f9	d2	d3	l1 +0.25	l2	l3	sw	Δ	Δ
GN.35181	ISO 7379-10-M8-50	10	M 8	16	50	13	7	5	44		
GN.35398	ISO 7379-10-M8-55	10	M 8	16	55	13	7	5	47		
GN.35182	ISO 7379-10-M8-60	10	M 8	16	60	13	7	5	50		
GN.35399	ISO 7379-10-M8-65	10	M 8	16	65	13	7	5	53		
GN.35400	ISO 7379-10-M8-70	10	M 8	16	70	13	7	5	56		
GN.35401	ISO 7379-10-M8-80	10	M 8	16	80	13	7	5	62		
GN.35402	ISO 7379-10-M8-90	10	M 8	16	90	13	7	5	68		
GN.35403	ISO 7379-10-M8-100	10	M 8	16	100	13	7	5	75		
GN.35404	ISO 7379-12-M10-16	12	M 10	18	16	16	9	(-1)	6	36	
GN.35183	ISO 7379-12-M10-20	12	M 10	18	20	16	9	(-1)	6	39	
GN.35184	ISO 7379-12-M10-25	12	M 10	18	25	16	9	(-1)	6	44	
GN.35185	ISO 7379-12-M10-30	12	M 10	18	30	16	9	(-1)	6	48	
GN.35405	ISO 7379-12-M10-35	12	M 10	18	35	16	9	(-1)	6	52	
GN.35186	ISO 7379-12-M10-40	12	M 10	18	40	16	9	(-1)	6	56	
GN.35406	ISO 7379-12-M10-45	12	M 10	18	45	16	9	(-1)	6	63	
GN.35187	ISO 7379-12-M10-50	12	M 10	18	50	16	9	(-1)	6	67	
GN.35407	ISO 7379-12-M10-55	12	M 10	18	55	16	9	(-1)	6	71	
GN.35188	ISO 7379-12-M10-60	12	M 10	18	60	16	9	(-1)	6	74	
GN.35408	ISO 7379-12-M10-65	12	M 10	18	65	16	9	(-1)	6	75	
GN.35409	ISO 7379-12-M10-70	12	M 10	18	70	16	9	(-1)	6	83	
GN.35189	ISO 7379-12-M10-80	12	M 10	18	80	16	9	(-1)	6	91	
GN.35410	ISO 7379-12-M10-90	12	M 10	18	90	16	9	(-1)	6	96	
GN.35411	ISO 7379-12-M10-100	12	M 10	18	100	16	9	(-1)	6	100	
GN.35190	ISO 7379-16-M12-25	16	M 12	24	25	18	11	8	86		
GN.35191	ISO 7379-16-M12-30	16	M 12	24	30	18	11	8	93		
GN.35412	ISO 7379-16-M12-35	16	M 12	24	35	18	11	8	101		
GN.35192	ISO 7379-16-M12-40	16	M 12	24	40	18	11	8	109		
GN.35413	ISO 7379-16-M12-45	16	M 12	24	45	18	11	8	118		
GN.35193	ISO 7379-16-M12-50	16	M 12	24	50	18	11	8	126		
GN.35414	ISO 7379-16-M12-55	16	M 12	24	55	18	11	8	131		
GN.35194	ISO 7379-16-M12-60	16	M 12	24	60	18	11	8	140		
GN.35415	ISO 7379-16-M12-65	16	M 12	24	65	18	11	8	148		
GN.35416	ISO 7379-16-M12-70	16	M 12	24	70	18	11	8	155		
GN.35195	ISO 7379-16-M12-80	16	M 12	24	80	18	11	8	160		
GN.35417	ISO 7379-16-M12-90	16	M 12	24	90	18	11	8	186		
GN.35418	ISO 7379-16-M12-100	16	M 12	24	100	18	11	8	200		
GN.35196	ISO 7379-20-M16-30	20	M 16	30	30	22	14	10	170		
GN.35419	ISO 7379-20-M16-35	20	M 16	30	35	22	14	10	170		
GN.35197	ISO 7379-20-M16-40	20	M 16	30	40	22	14	10	194		
GN.35420	ISO 7379-20-M16-45	20	M 16	30	45	22	14	10	205		
GN.35198	ISO 7379-20-M16-50	20	M 16	30	50	22	14	10	219		
GN.35421	ISO 7379-20-M16-55	20	M 16	30	55	22	14	10	230		
GN.35199	ISO 7379-20-M16-60	20	M 16	30	60	22	14	10	244		
GN.35422	ISO 7379-20-M16-65	20	M 16	30	65	22	14	10	260		
GN.35423	ISO 7379-20-M16-70	20	M 16	30	70	22	14	10	266		
GN.35200	ISO 7379-20-M16-80	20	M 16	30	80	22	14	10	290		
GN.35424	ISO 7379-20-M16-90	20	M 16	30	90	22	14	10	315		
GN.35425	ISO 7379-20-M16-100	20	M 16	30	100	22	14	10	340		
GN.35201	ISO 7379-24-M20-50	24	M 20	36	50	27	16	12	340		
GN.35426	ISO 7379-24-M20-55	24	M 20	36	55	27	16	12	360		
GN.35202	ISO 7379-24-M20-60	24	M 20	36	60	27	16	12	370		
GN.35427	ISO 7379-24-M20-65	24	M 20	36	65	27	16	12	393		
GN.35428	ISO 7379-24-M20-70	24	M 20	36	70	27	16	12	410		
GN.35203	ISO 7379-24-M20-80	24	M 20	36	80	27	16	12	450		
GN.35429	ISO 7379-24-M20-90	24	M 20	36	90	27	16	12	480		
GN.35204	ISO 7379-24-M20-100	24	M 20	36	100	27	16	12	516		



Maskinkomponenter